

Professionally approved products.

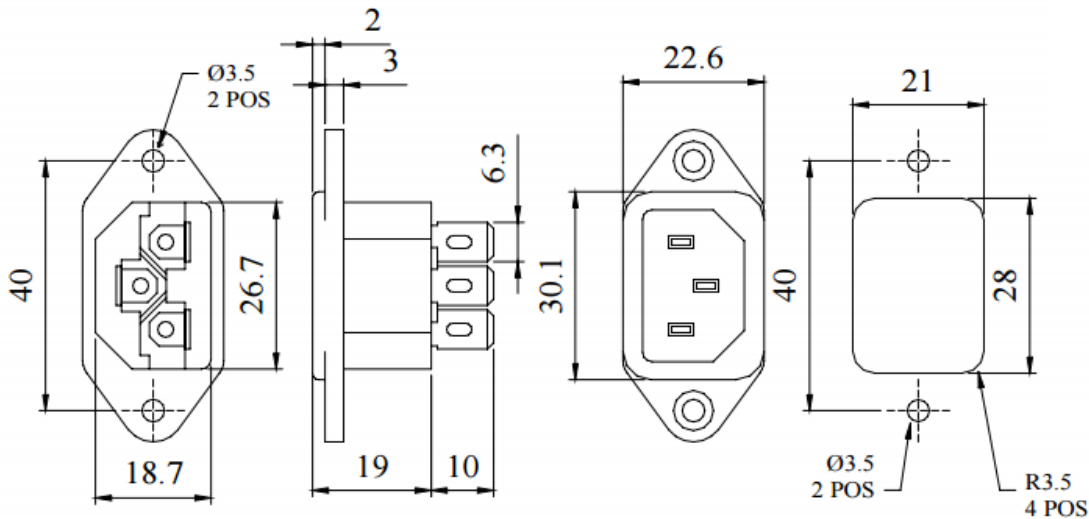
Datasheet

C14 Male Straight Panel Mount IEC Connector, Solder, Spade Termination, Rated At 10A, 250 V ac

RS Stock number 488-191



Dimensions: (mm)



Professionally approved products.

Datasheet

Specifications

A durable three pin panel plug, with solder lug / spade terminals. Can be mounted above the panel on any thickness of material or below the panel for up to 2,0mm thick material. Suitable for use measuring instruments, SMPS, ITE and OA.

For panel cut-out, use punch number 974-0010 (pull through) or 906-0050 (punch and die).

Weight approximately 10g.

Approvals UL, CSA and TUV.

MATERIAL

HOUSING : Nylon 66, black
UL 94 V0

CONTACTS : Brass, nickel plate

ELECTRICAL

Voltage Rating : 250 Vac

Current Rating : 10 Amps

Insulation Resistance : 1000 M Ω @500 Vac

Withstanding Voltage : 2000 Vac for 1 minute
between line to gnd.

Temperature Range : -20°C to +80°C